



YOUR CONFERENCE

Chateau Marlborough is a unique venue offering luxury accommodation and meeting/conference facilities with the latest executive style boardrooms fully equipped with high-tech equipment. Your group will enjoy an environment of luxury, seclusion, comfort and intimacy with attentive yet unobtrusive service. All our rooms provide ample natural lighting while blackout curtains can be used for presentations. Concealed dividing walls divide all rooms which gives the ability to have the desired room, combination of rooms or the entire conference area.

THE PINOT ROOM

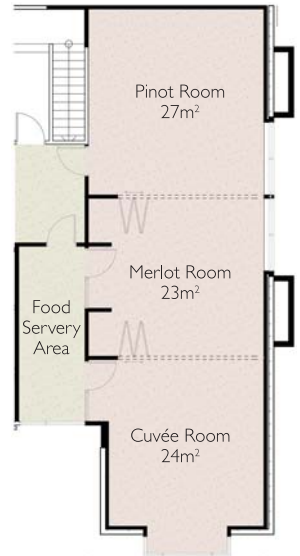
- 50" LCD High Definition TV
- DVD/CD Player
- Data Projector - Hire Charge \$150 Day / \$75 Half Day
- Screen
- Telephone Conference Calling
- Laptop Connection
- Air Conditioned
- Wireless Access
- Hire Charge Half Day or Evening \$120
- Full Day \$160

THE MERLOT ROOM

- More suited for small meetings and if extra room required
- Air Conditioned
- Wireless Access
- Hire Charge Half Day or Evening \$80
- Full Day \$120

THE CUVÉE ROOM

- 50" LCD High Definition TV
- Video Player
- DVD/CD Player on request
- Data Projector - Hire Charge \$150 Day / \$75 Half Day
- Screen
- Telephone Conference Calling
- Laptop Connection
- Air Conditioned
- Wireless Access
- Hire Charge Half Day or Evening \$100
- Full Day \$140



DAILY DELEGATE PACKAGE:

In addition to the many menu options we also offer a daily delegate package for all day corporate meetings. It includes the following:

- Room Hire
- White board & Markers
- Screen
- Pads & Pens
- Tea & Coffee on arrival
- Morning tea
- Working lunch
- Afternoon tea
- (Chef Selection menu changes daily)

47.00 per person
(minimum number 10)

EQUIPMENT AVAILABLE

- Whiteboard/Pens complimentary
- Lectern complimentary
- Laser Pointer complimentary
- VGA extension cable complimentary
- Electronic Whiteboard/Pens \$50
- Microphone \$20
- Flip Chart and Paper \$20

If you require any equipment not listed above please do not hesitate to ask. We would be more than happy to arrange this for you. Our Conference Rooms set ups also include pads, pens, water and mints.

CONFERENCE ROOM CAPACITIES

	THEATRE	CLASSROOM	BOARDROOM	U-SHAPE
PINOT	15	8-10	12-14	9
MERLOT	8-10	4-6	8	7
CUVÉE	10-12	6-8	10	8

QUENCH CAFÉ AND WINE BAR

Seating Capacity: 40

CATERING

A full range of conference menus are available, including Breakfast, Conference Lunches, Morning and Afternoon Teas and Evening Dining. Please contact our Functions/Conference Manager for these.

ACCOMMODATION

De Luxe Studio Suites, Luxury Suites, Grande Studio Suites, One Bedroom Grande Apartments, 2 Bedroom Penthouse. Special Rates are available for conferencing, corporate, weekend and off season periods

CAR PARKING

Free off street parking available



Chateau Marlborough

PO Box 921, Cnr High & Henry Streets, Blenheim
Tel: 03 578 0064, Fax: 03 578 2661
Email: chateau@marlboroughnz.co.nz
Reservations Freephone 0800 75 22 75
www.marlboroughnz.co.nz

OPEN: FOR BUSINESS >>>

Conference at
Chateau Marlborough

As a conference destination Marlborough's commercial hub, Blenheim, offers visitors an exceptional environment in which to do business. Relaxed, centrally located, high sunshine hours and with a range of visitor attractions keenly sought after by international travellers.

Out-of-conference activities include the world renowned Marlborough Wine Trail, skiing in winter at Rainbow skifield or a visit to the stunning Marlborough Sounds. Dine in-house at Chateau Marlborough or at one of the many superb restaurants that boast fine cuisine matched with award winning local wines.

With all that Marlborough has to offer, staying at Chateau Marlborough for your conference is an easy decision... leaving for home may be a little more difficult.

DISTANCE AND TRAVEL TIMES:

BLenheim TO :	DISTANCE	TIME
PICTON	29 km	30 min
HAVELOCK	40 km	35 min
KAIKOURA	130 km	1.40 min
NELSON	115 km	1.30 min
Airport to Chateau	8km	10 min
Train Station to Chateau	2km	3 min

All major banks are within 5 minutes walk from the Chateau

ACTIVITIES:

Whether you arrive from across the magnificent Queen Charlotte Sound, by the scenic drive north from Kaikoura or via Nelson and the spectacular waterways, you will not fail to be impressed with Marlborough's striking beauty, its wonderful climate and its genuinely warm hearted people.

The vast array of world renowned vineyards and wineries which dot the landscape are the jewels in Marlborough's crown. At any time of the year there is a vast array of activities and tours organized for visitors to Marlborough. The Chateau Marlborough Accommodation is the perfect base to explore these treasures and to sample the sheer abundance that is Marlborough...

WINE TOURS:

Always on offer and very popular with Chateau Marlborough guests are the guided wine trails.

These boutique wine tours are limited to small intimate groups offering an unbeatable combination of local knowledge and personalized service while showcasing the best of Marlborough wineries. Top these great tours off with a winery lunch or include a visit to the olive groves or maybe sample some of our world famous liqueurs. A variety of tour schedules cater for both the independent traveler as well as a corporate tour option.

MARLBOROUGH SOUNDS:

Another option is to embark on a greenshell mussel cruise from either Picton or Havelock. This unique wine and food cruise takes you through the tranquil waters of the Marlborough Sounds where you will learn about the history of the sounds and pioneering people. You will visit a greenshell mussel farm and sample freshly steamed mussels with a glass of world famous Marlborough Sauvignon Blanc.

Mail Boat Cruises through the Sounds, jet ski and wakeboard tours, art and craft trails, boutique wineries, breweries and Prenzel Distillery the home of natural liqueurs and culinary products, iconic cafes, sampling the local award-winning Moa beer in a champagne bottle... these are just a taste of the seemingly endless choices in this diverse and wonderful region.

EVENTS:

If you arrive in January you can catch the action at the Waterlea Racing Club Carnival for premier horseracing. In February, you are in time to experience the Marlborough Food and Wine Festival, a week long festival of Marlborough wine and gourmet delights. March is the month for the Havelock Mussel Festival, while April and Easter weekend are the time to see the Classic Warbird Fighters Airshow every second year. November is Garden Marlborough time with the town and Gardens alight with summer color, a great time to see the gardens of Blenheim, Marlborough and the sounds on one of the garden tours and garden parties held over the festival week with the Garden fete held at Seymour Square on the last day of this wonderful event.

OPEN: FOR BUSINESS >>>

Conference at
Chateau Marlborough



Chateau Marlborough

PO Box 921, Cnr High & Henry Streets, Blenheim
Tel: 03 578 0064, Fax: 03 578 2661
Email: chateau@marlboroughnz.co.nz
Reservations Freephone 0800 75 22 75
www.marlboroughnz.co.nz

CHATEAU MARLBOROUGH'S GREEN MEETING AND CONFERENCE VENUE

As a meeting planner, you know that choosing a venue is no easy task. To host a memorable meeting, you need to give people new experiences - ones they'll talk about for years. But hosting an environmentally responsible event is also important. So how do you do both? The answer is Chateau Marlborough's green meeting and conference venue. Through its three main components - Eco-Accommodation, Eco-Cuisine and Eco-Service. Eco-Meet provides a meeting structure that encourages maximum waste diversion and environmental awareness for conference attendees.

ECO-ACCOMMODATION

- Energy efficient bulbs used in all areas
- Double Glazing in new suites
- Hot water cylinders set to 55 degrees
- Dimmers used in suites
- Air conditioning systems maintained to ensure efficient use
- Energy efficient appliances used
- Hot water cylinders and pipes insulated
- Suits are insulated to reduce heat loss
- Extractor fans on timers
- Guests given the option to not have room serviced and towels changed daily.
- Recycling bins provided in all suites
- Plastic Mini Bar Wines supplied by our local sustainable winery - Yealands Estate
- Eco friendly cleaning products used to a minimum
- Used soap sent back to supplier for recycling
- Dual flush systems on toilets in new suites
- We have a guest towel agreement in all suites
- Shower water restrictors installed

ECO-CUISINE

- We aim to purchase products from local suppliers
- Kitchen Scraps collected weekly by local farmer for feeding to stock
- Cooking Oil from Kitchen recycled for Bio Fuel
- Herbs and veggies grown on site
- Menus featuring responsible seafood items
- Menus featuring vegetarian options or a reduction in animal proteins

ECO-SERVICE

- Full Recycling System in Place - Glass, Cardboard, Tins, Aluminium, Paper and Plastic
- Bulk ordering done in all departments to avoid excess packaging.
- Staff encouraged to reuse plastic bags then recycled
- Continual monitoring and recording of energy consumption on a monthly basis any abnormal consumption is discussed with our supplier
- Conduct an energy audit to check current consumption patterns and where any improvements could be made, discuss with our sustainable development team
- Staffs are fully trained in energy saving practices (turning off lights and equipment as necessary).
- All computers and equipment in offices are switched off when not in use
- Lighting in public and outdoor areas on timers and sensors
- Guest Laundry washing machines are set for cold water only
- Swimming Pool Pump on timer
- Staff are encouraged to walk, cycle or car pool to work
- Recycling of Printer Toners
- Limited Printing of emails, reservations and general paperwork
- Recycled Paper used for note paper and orders in the restaurant
- Hand Towels used in Public toilets in place of Paper Towels
- Garden waste is transported to a local farm for mulching
- Pool Chlorine containers refilled
- Eco friendly cleaning products used to a minimum
- Continual monitoring and recording of water consumption on a monthly basis, any abnormal consumption is discussed with our Sustainable Development Team
- Maintenance Manager checks for leaks in taps, toilets, valves and pipe work on a weekly basis
- Water features recycle their own water
- Limited water used in cleaning all windows
- Garden watering is on timers
- Mulch used on gardens to reduce the amount of water needed.
- Automatic shut off spray nozzles used for the washing down of buses to ensure the conservation of water and minimise waste
- We have formed a relationship with the Department of Conservation with an annual commitment by staff to participate in restoration activities in the area
- A native area has been planted at Chateau Marlborough to support our local native bird life
- Commitment from staff to follow all environmental initiatives in place

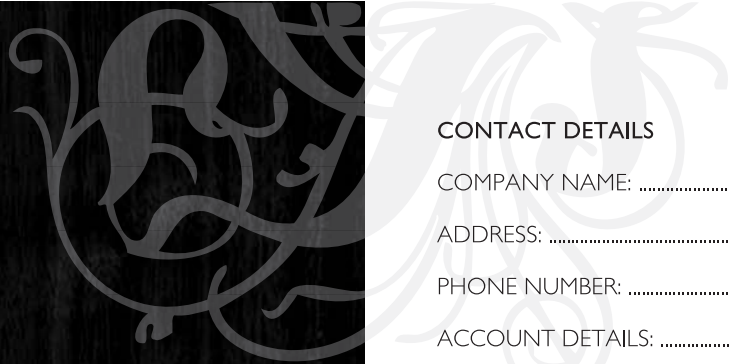
OPEN: FOR BUSINESS >>>

Conference at
Chateau Marlborough



Chateau Marlborough

PO Box 921, Cnr High & Henry Streets, Blenheim
Tel: 03 578 0064, Fax: 03 578 2661
Email: chateau@marlboroughnz.co.nz
Reservations Freephone 0800 75 22 75
www.marlboroughnz.co.nz



CONTACT DETAILS

COMPANY NAME:

ADDRESS:

PHONE NUMBER:

ACCOUNT DETAILS:

ON SITE CONTACT:

DATE:

CONFERENCE DETAILS

CONFERENCE ROOM:

SET UP STYLE:

PAX NUMBER:

EQUIPMENT DETAILS

DATA PROJECTOR:

WHITEBOARD NORMAL: CD PLAYER:

ELECTRONIC W/BOARD: LECTERN:

FLIP CHART: LASER POINTER:

SCREEN: EXTRA PAPER:

TV: MICRO PHONE:

DVD/VIDEO PLAYER: CONF. PHONE:

TIMING

DAY 1			DAY 2			DAY 3		
	PAX	TIME		PAX	TIME		PAX	TIME
START			START			START		
MORNING TEA			MORNING TEA			MORNING TEA		
LUNCH			LUNCH			LUNCH		
AFTERNOON TEA			AFTERNOON TEA			AFTERNOON TEA		
DINNER			DINNER			DINNER		

CATERING REQUIREMENTS:

.....
.....
.....

OPEN:FOR BUSINESS >>>

Conference at
Chateau Marlborough



Chateau Marlborough

PO Box 921, Cnr High & Henry Streets, Blenheim
Tel: 03 578 0064, Fax: 03 578 2661
Email: chateau@marlboroughnz.co.nz
Reservations Freephone 0800 75 22 75
www.marlboroughnz.co.nz